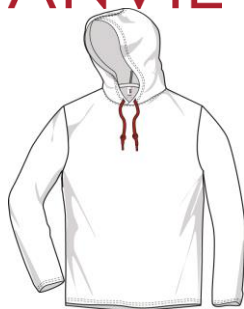


ANVIL®



987

Adult Lightweight Long Sleeve Hooded Tee



DETAILS

Weight

Content

Yarn Count

Features

146.0 G/SqM
 100% Combed Ring Spun Cotton
 32/1
 High stitch density for smoother printing surface
 Semi-fitted
 Transitioning to side seam in 2019
 Display tape
 Relaxed unlined hood with contrast drawcord
 Twin-needle neck, sleeve and bottom hem
 TearAway label
 Oeko-Tex® Standard 100 Certified

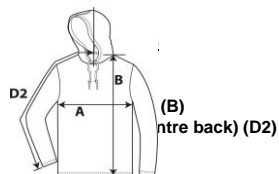
Sizes

Case Packs

Colours

SKU's

S-2XL 36 PIECES
 10
 50



Chest (A)
Length from HPS (B)
Sleeve length (centre back) (D2)

| | Tol- | Tol+ | S | M | L | XL | 2XL |
|--|-------|-------|--------|--------|--------|--------|--------|
| | 1.905 | 1.905 | 45.720 | 50.800 | 55.880 | 60.960 | 66.040 |
| | 2.540 | 2.540 | 69.850 | 73.025 | 75.565 | 78.105 | 81.280 |
| | 2.540 | 2.540 | 80.010 | 84.455 | 88.900 | 92.710 | 96.520 |
| | Tol- | Tol+ | S | M | L | XL | 2XL |
| | 0.750 | 0.750 | 18.000 | 20.000 | 22.000 | 24.000 | 26.000 |
| | 1.000 | 1.000 | 27.500 | 28.750 | 29.750 | 30.750 | 32.000 |
| | 1.000 | 1.000 | 31.500 | 33.250 | 35.000 | 36.500 | 38.000 |

S-3XL

COLOURS

Black / Dark Grey
 Caribbean Blue / Dark Grey
 Heather Blue / Neon Yellow
 Heather City Green / Dark Grey
 Heather Dark Grey / Dark Grey
 Heather Green / Neon Yellow
 Heather Purple / Neon Yellow
 Navy / Dark Grey
 Red / Dark Grey
 White / Dark Grey

| Code | Comments |
|------|-------------------------------------|
| 036 | |
| 308 | |
| 321 | 35% Ring Spun Cotton, 65% Polyester |
| 471 | 35% Ring Spun Cotton, 65% Polyester |
| 334 | 35% Ring Spun Cotton, 65% Polyester |
| 322 | 35% Ring Spun Cotton, 65% Polyester |
| 232 | 35% Ring Spun Cotton, 65% Polyester |
| 032 | |
| 338 | |
| 030 | |

CHANGES

Total Net Change 0 SKU's